



ASPIRE

— TO MOVE —



Palladian, Victoria Bridge Road, Bath, BA2

Video and physical viewings available. Modern two bedroom apartment located in the popular Western Riverside development. Available unfurnished, from the 11th August the flat also benefits from a balcony and allocated parking space.

The first phase of the Riverside development was completed in 2013 and has since flourished into a popular area for young professionals, families and students. The location offers excellent access into Bath city centre which is located 0.8 miles away. There is a Sainsbury's 0.3 miles away.

£1,800 PCM

Palladian, Victoria Bridge Road, Bath, BA2

- Modern two bedroom apartment
- Unfurnished
- Holding deposit: £415
- Video tour available
- Allocated parking space
- Bike/bin store
- Communal gardens
- Council tax C
- Not for students
- Available 11th August

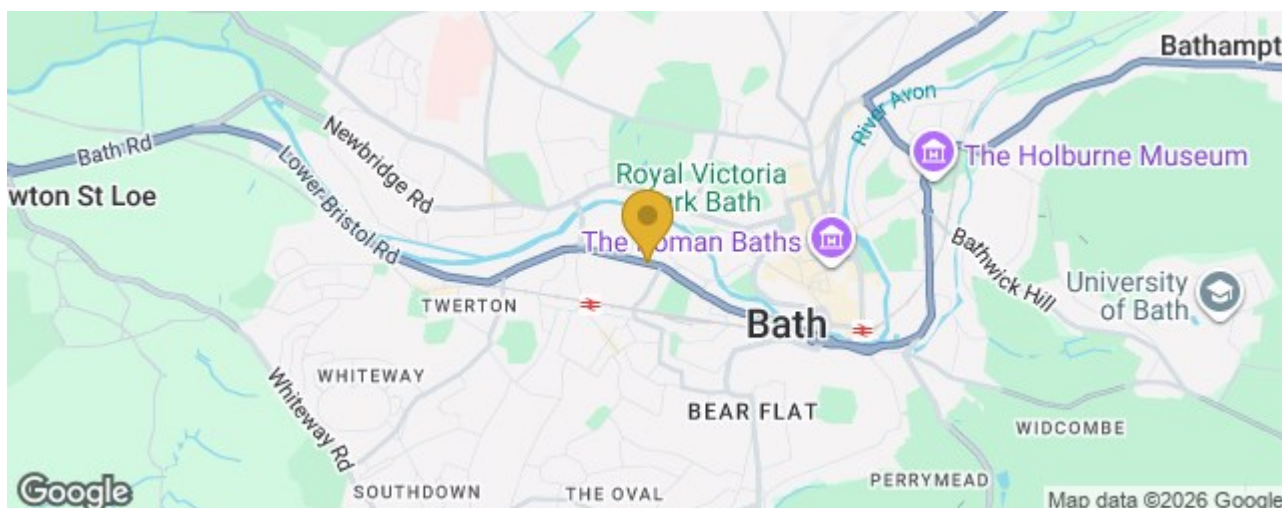
Video and physical viewings available. Modern two bedroom apartment located in the popular Western Riverside development. Available unfurnished, from the 11th August, the flat also benefits from a balcony and allocated parking space.

The first phase of the Riverside development was completed in 2013 and has since flourished into a popular area for young professionals, families and students. The location offers excellent access into Bath city centre which is located 0.8 miles away. There is a Sainsbury's 0.3 miles away.

The accommodation comprises of open plan kitchen/living/dining room with base and wall units, cooker, hob, extractor, fridge/freezer and dishwasher. There is dining table with chairs that can be included. A balcony is accessed off the living room and provides a lovely area to enjoy the views over the communal gardens. There are two bedrooms, both of which are doubles. Bedroom one benefits from an en-suite shower room and built in wardrobe. The second bedroom is also a double size and could be used as a second bedroom, guest bedroom or study. The apartment also benefits from an additional bathroom with shower over bath, WC and sink. There is a storage cupboard in the hallway which houses a washer/dryer and boiler.

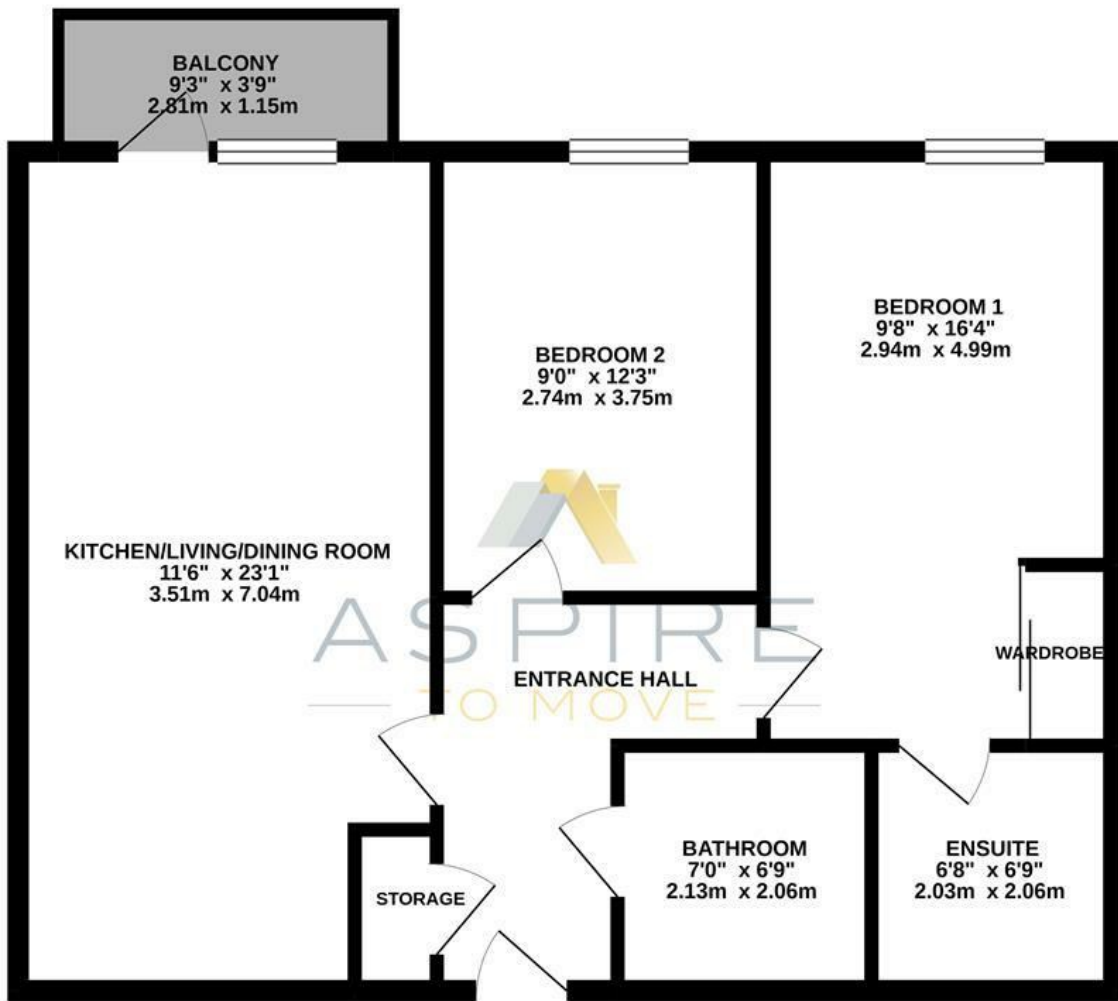
The apartment benefits from having an allocated parking space in the secure car park below as well as having access to communal gardens, bin store and bike store.

The property is available from the 11th August and would best suit a single professional/professional couple or two professional sharers. No students.





FIRST FLOOR
697 sq.ft. (64.8 sq.m.) approx.



PALLADIAN, VICTORIA BRIDGE ROAD, BATH, BA2

TOTAL FLOOR AREA: 697 sq.ft. (64.8 sq.m.) approx.

Whilst every attempt has been made to ensure the accuracy of the floorplan contained here, measurements of doors, windows, rooms and any other items are approximate and no responsibility is taken for any error, omission or mis-statement. This plan is for illustrative purposes only and should not be used as such by any prospective purchaser. The services, systems and appliances shown have not been tested and no guarantee as to their operability or efficiency can be given.
Made with Metropix ©2021.

These particulars, whilst believed to be accurate are set out as a general outline only for guidance and do not constitute any part of an offer or contract. Intending purchasers should not rely on them as statements of representation of fact, but must satisfy themselves by inspection or otherwise as to their accuracy. No person in this firm's employment has the authority to make or give any representation or warranty in respect of the property.

